



balmy
BEACH RESORT.

SUSTAINABILITY REPORT 2024



Dear Guests, Business Partners, and Employees,

As BALMY BEACH RESORT HOTELS, we are aware of the responsibilities brought by sustainable tourism and understand that sustainability efforts in tourism minimize the negative impacts on environmental and cultural heritage. We strive to leave a better world for future generations. In this regard, we continue our efforts in various areas encompassed by the concept of sustainability, such as reducing environmental impacts, managing energy, water, and waste, preserving cultural and social heritage, providing economic and social benefits to the local community, and protecting the environment. In today's world, where the importance of climate change and global warming is increasingly felt, we aim to fulfill our responsibilities in the best possible way and strive to ensure that our employees embrace environmental consciousness. We aim to increase our success by effectively managing sustainability risks and focusing on achieving sustainable growth with long-term strategies.

OUR COMPANY POLICY

- To prioritize customer satisfaction and provide safe and high-quality services while ensuring minimal environmental harm and maximum benefit,
- To respect human rights and comply with all related legislation and agreements, treating all our guests and employees equally without discrimination based on race, color, gender, religion, opinion, age, social and marital status, family background, physical or mental disability, or sexual orientation,
- To fully comply with all legal regulations and requirements we have accepted as compliance obligations in all areas of our operations through the participation of our employees,
- To continuously identify and improve risks and opportunities at the highest level in all our processes, including Customer Satisfaction, Food Safety, Sustainable Tourism, Environmental Risk Management, and Occupational Health and Safety,
- To raise awareness among our employees by providing training related to all these processes,
- To continuously monitor and reduce the use of energy and water resources without affecting guest satisfaction,
- To minimize waste at the source, ensure the recycling of generated waste, reduce environmental impacts during disposal, and adopt the philosophy of zero waste and waste recovery,
- To procure our needs from local vendors to reduce carbon footprint and support local community development while creating awareness for better production practices,
- To encourage our suppliers and business partners to improve their environmental performance and engage effectively in the life cycle approach by promoting green economy principles,
- To protect and support the promotion of the historical and cultural heritage of our destination in collaboration with local communities and businesses,
- To minimize the negative impacts of tourism on the environment and cultural heritage while maximizing sustainable development in tourism,
- To engage in activities that support the principle of sustainable development, and to give importance to risks and opportunities related to issues that will affect future generations, such as mitigating the impacts of climate change and preserving biodiversity,
- To ensure that animals live appropriately in their natural environment as per the Animal Protection Law,
- To prevent adverse environmental impacts from our activities, reduce air, water, and soil pollution and noise through effective solutions based on the best available technologies,
- To stand against negative issues such as sexual abuse, corruption, and discrimination,
- To take necessary measures to prevent our employees from being subjected to psychological harassment, organize awareness training on this issue, pay attention to the protection of privacy and personal life, handle false accusations sensitively, and fully comply with relevant legislation.

We, as **BALMY HOTELS**, commit to these principlesWe commit as **BALMY BEACH HOTEL**.

Our Vision:

To be the first choice of guests guided by corporate values and quality standards, ensuring continuity.

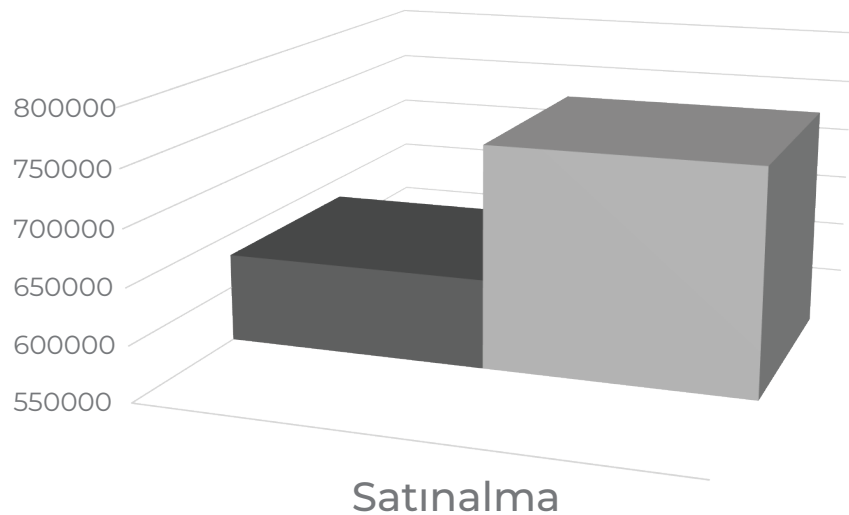
Our Mission:

In the sector we serve, to generate outcomes that meet expectations with the highest quality standards, deserving the satisfaction and trust of our employees and customers.

Supporting Local Economy and Sustainable Procurement Practices

We are aware of our contribution to the local economy, therefore we procure most of our supplies from local producers. For sustainable tourism, we purchase products and services that are environmentally friendly and have high energy, water, and waste efficiency.

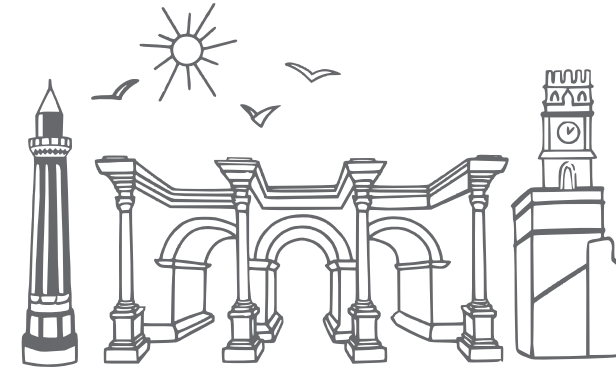
Local Pruchasing 2023-2024



- *The decorative materials and pillows used in our facility are sourced from women's cooperatives.*
- *Similarly, the wooden bowls and plates we use for decorative purposes are handcrafted products made by a carpenter in Antalya.*
- *The pacifier chains we gift to our pregnant guests are supplied by women entrepreneurs based in Beldibi.*

With our environmental sensitivity and awareness of preserving historical and cultural values, we promote sites located in the Antalya region to our guests and inform them about the rules they should follow outside the facility.

Through this practice, we aim to raise our guests' awareness about the protection of historical and cultural areas.



ANTİK KENT, MÜZE, CAMİ VE DOĞAL YAŞAM
PARKI KURALLARI

**RULES FOR THE ANCIENT CITY, MUSEUM, MOSQUE, AND
NATURAL LIFE PARK**

REGELN FÜR DIE ANTIKE STADT, DAS MUSEUM, DIE MOSCHEE
UND DEN NATURPARK

ПРАВИЛА ДЛЯ ДРЕВНЕГО ГОРОДА, МУЗЕЯ, МЕЧЕТИ
И ПАРКА ЖИВОЙ ПРИРОДЫ



ANTALYA GO TÜRKİYE



MORE INFO

Local Food

We feature our local dishes and geographically indicated products at our buffet, introducing them to all our guests with “Traditional Turkish Food” labels.



ANTALYA PİYAZI

ANTALYA PİYAZ (BEAN SALAD)

PİYAZ AUS ANTALYA (BOHNENSALAT)

АНТАЛЯ ПИЯЗ

(ФАСОЛЕВЫЙ САЛАТ)

We introduce Anatolian Turkish traditions to our honeymoon guests with a single long pillow and small traditional Turkish souvenirs.



“Bir yastıkta kocamak”

geçmişten günümüze uzanan köklü bir Anadolu Türk geleneğini temsil eder.

Evlenen çiftlerin birlikte uzun bir ömür sürdürmelerini sembolize eder. Bu geleneğe göre, evliliklerinde ikiye bir olmayı ifade eden çiftler, yataklarında tek ve uzun bir yastık kullanırlardı. Yastık, çeviz sandıklarının önemli bir parçasıydı ve çift kişilik olmasıyla evlilikte birlik ve dayanışmayı simgelerdi.

Çiftler arasında anlaşmazlık olduğunda, kendi yastıklarını alıp farklı bir yerde uyuyamazlardı bu sorunların daha çabuk çözülmesine ve uzlaşmaya yönelik bir ortam sağlardı. Gelenek, kent kültürü tarafından zamanla yıpratılmış olsa da, Anadolu'nun kırsal kesimlerinde hala yaşatılmaktadır.

Balmy Hotels ailesi olarak bir yastıkta kocamak gibi sıkı ve aşk dolu bir birliktelikle, hayatınız boyunca birlikte zorlukları aşacağınız mutluluk dolu bir serüven diliyoruz.

balmy
HOTELS



Our Hidirellez Celebrations

Hidirellez is a seasonal festival celebrated in the Turkic world and some Balkan countries, typically on May 6th.

History:

According to ancient Turkic culture, Hidirellez has its roots in the pre-Islamic period when Turks celebrated the arrival of spring. These celebrations symbolized the rebirth of nature and abundance.

Celebration Customs:

Hidirellez celebrations may vary according to local traditions and beliefs, but some common elements include:

Wishing Tree:

Writing wishes on pieces of paper and hanging them on a tree is a widespread practice.

Jumping Over Bonfires:

A ritual where people jump over fires to cleanse themselves of evil spirits and wish for health.

Venturing into Green Areas:

Organizing events in green spaces to celebrate the revitalization of nature.

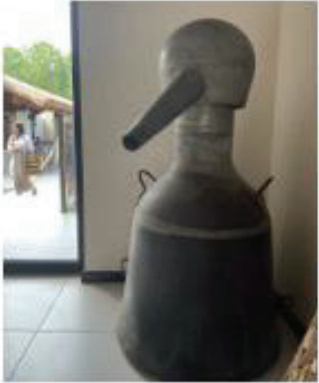
Throwing Flowers into Water at Night:

On Hidirellez night, throwing flowers and green plants into water is a ritual believed to bring prosperity.

This festival symbolizes people's desire to live in harmony with nature, as well as wishes for abundance and health.



In our hotel, we have preserved cultural structures that are regionally significant, such as olive oil presses, crushers, copper boilers used for extracting rose oil, and jars. We provide informational presentations about these cultural structures within our hotel to educate our guests.



balmy
HOTELS



KÖY TİPİ GÜL YAĞI İBRİĞİ

1930'dan beri kullanılan imbik adı verilen basit damıtma kazanlarında su distilasyon yöntemiyle üretilir. Bu yöntemde imbiğe 15 kg taze gül çiçeği konur ve içine 45 litre su ilave edilerek iki saat kaynatılır. İşlem sonunda 5 gr gül yağı elde edilir. Ülkemizde Isparta ilinde yetiştirilen gül ve gül yağı "coğrafi işaret" sahibi değerli bir üründür.

ROSE OIL PITCHER

It is produced by water distillation method in simple distillation boilers called retort, which has been used since 1930. In this method, 15 kg of fresh rose flowers are placed in the retort and 45 liters of water is added to it and boiled for two hours. At the end of the process, 5 gr rose oil is obtained. Rose and rose oil grown in the province of Isparta in our country is a rare product with a "geographical indication".



DÖVEN

18.yy sonu 19.yy başında tarımda makinelaşmanın gerçekleşmediği dönemde arpa harmanlama için kullanılmıştır. Genellikle iki öküz veya iki katır tarafından sürülünerek kullanılan alet günümüzde yerini biçer döver almıştır.

THRESHING SLEDGE

At the end of the 18th century and at the beginning of the 19th century, barley was used for threshing when the mechanization of agriculture did not take place. Threshing Sledge, generally operated by two oxen or two mules, has now been replaced by machines.

balmy
HOTELS



balmy
HOTELS

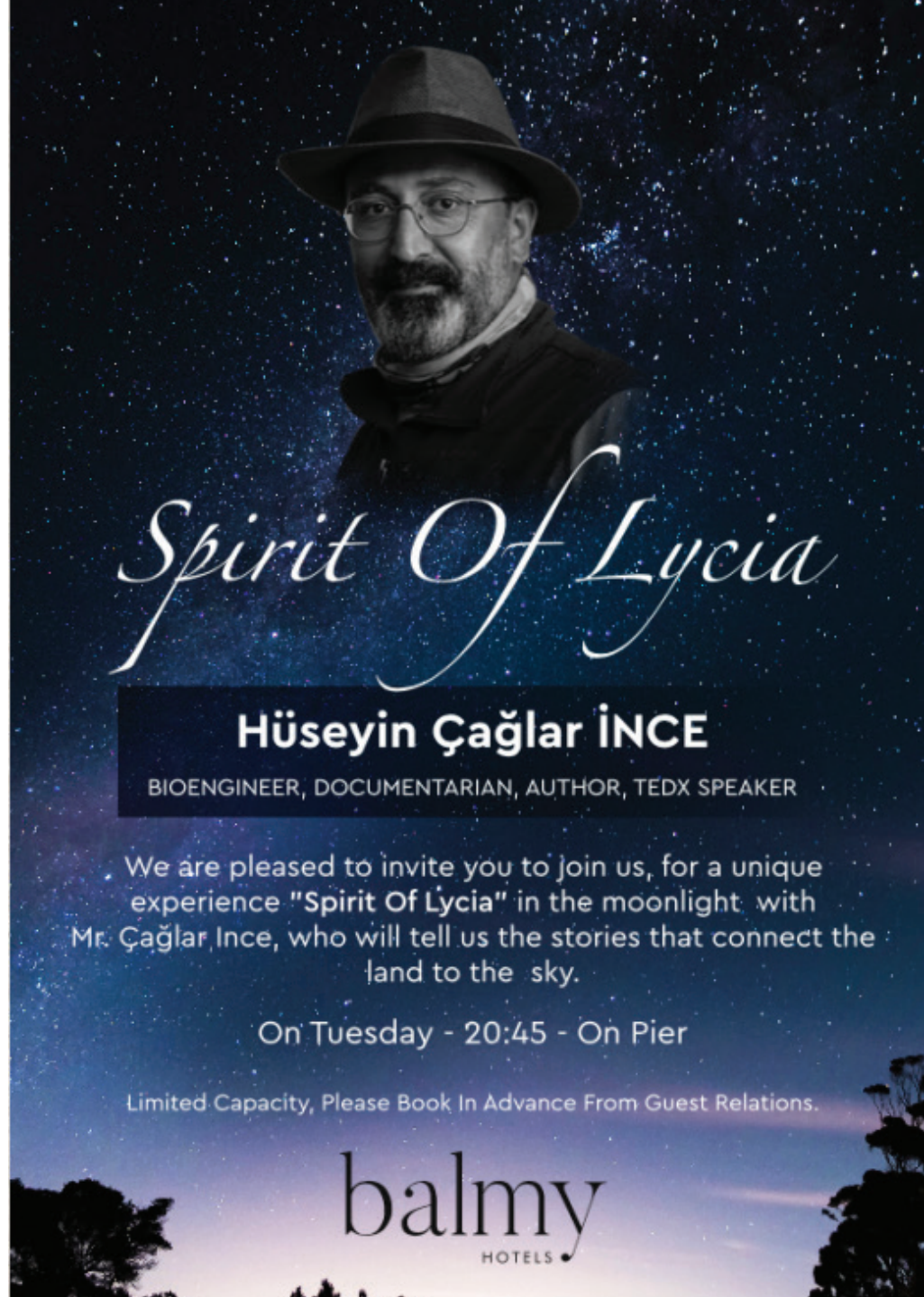
AHŞAP ZEYTİN SIKMA HENGESİ

1940lı yıllarda ülkemizde kullanılan sistem; insan ya da hayvan kuvveti ile zeytin hamurundan yağ çıkarmak için kullanılır. Yağ çıkartırken daha fazla bası yapmaya yarayan sonsuz vida sistemi Romalılar tarafından geliştirilmiştir. Köken çevrimisiyle ortadaki vida aşağıya hareket eder ve basıyı uygulayarak içindeki zeytin yağını aşağıya akması sağlar.

WOODEN OLIVE PRESSING VISE

The system used in our country since the 1940s is used to extract olive oil by animal or human power. The introduction of the screw by the Romans was one of the most important developments in oil production technology, which made it possible to increase the amount of pressure on olive paste. Turning the handle causes the wood screw to move down and apply pressure to the press board. The wooden squeezes the olive paste and the olive oil flows down and collected by the producer to be bottled.

Bioengineer Çağlar İnce informs us about the mythological stories of the region, nature and natural history, wildlife, mythological tree stories, endemics and species of the region, we offer our guests cocktails containing herbs and spices mentioned in the stories.



Spirit Of Lycia

Hüseyin Çağlar İNCE
BIOENGINEER, DOCUMENTARIAN, AUTHOR, TEDX SPEAKER

We are pleased to invite you to join us, for a unique experience "Spirit Of Lycia" in the moonlight with Mr. Çağlar İnce, who will tell us the stories that connect the land to the sky.

On Tuesday - 20:45 - On Pier

Limited Capacity, Please Book In Advance From Guest Relations.

balmy
HOTELS

RESPONSIBLE PURCHASING PRACTICES

At **Balmy Beach Resort Hotel**, our goal is to ensure that all goods and services required by our operations are procured on time, at competitive prices and payment terms, and at the highest possible quality.

As part of our implemented **Quality Management System requirements**, we encourage our suppliers to grow and develop alongside us.

In material procurement, we prioritize environmentally friendly packaged products. We take care to select our suppliers from companies that are environmentally conscious. In supplier selection, our preference is given to suppliers that have **ISO 14001 Environmental Management System certification**, products with FSC labels, and for food suppliers, those holding **ISO 22000 Food Safety Management System certification**.

We prefer to source our purchases as locally as possible by working with nearby companies. In this way, we aim to reduce the environmental impact by minimizing carbon emissions from supplier delivery vehicles, while also supporting regional employment.

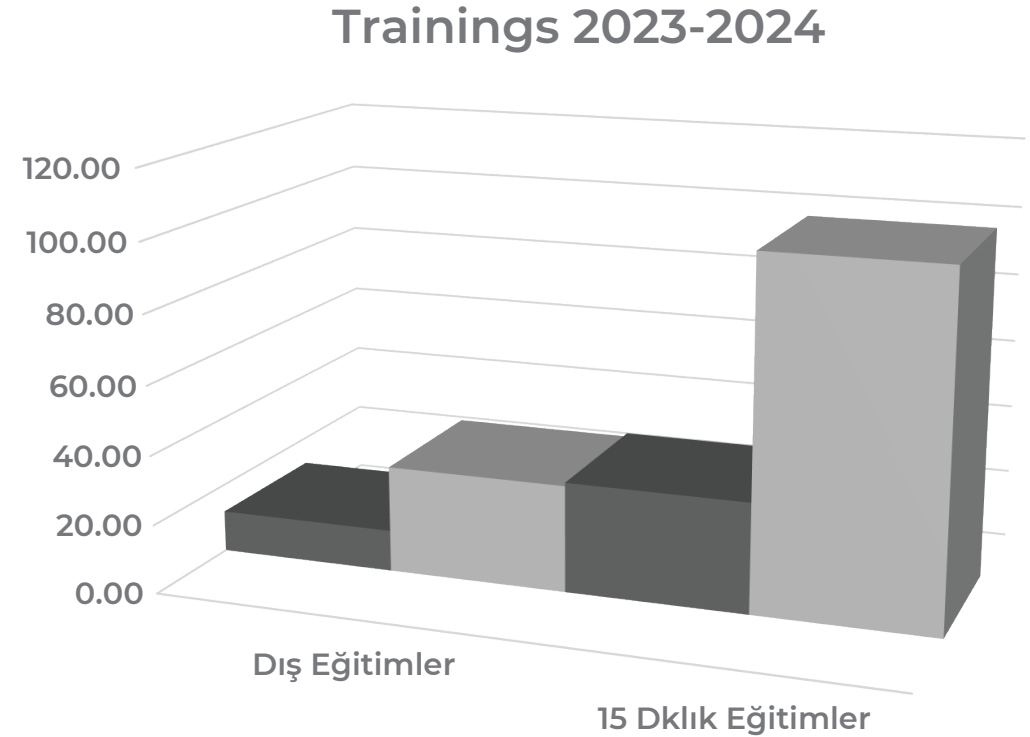
Provided that they meet our purchasing criteria, we accept products with priority. We conduct on-site evaluations of our suppliers at regular intervals. For equipment related to energy consumption, we prefer to purchase **A+++ class** product groups.



Trainings:

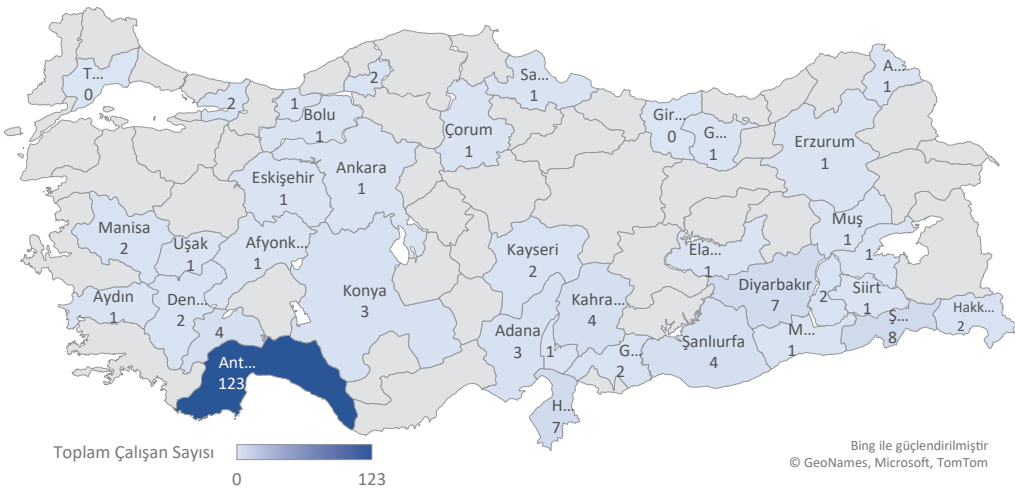
At the beginning of each season, in line with our planning, all employees receive both Mandatory External Trainings and On-the-Job Trainings.

In addition to these mandatory trainings, various programs are organized on different topics to enhance employee awareness and motivation.

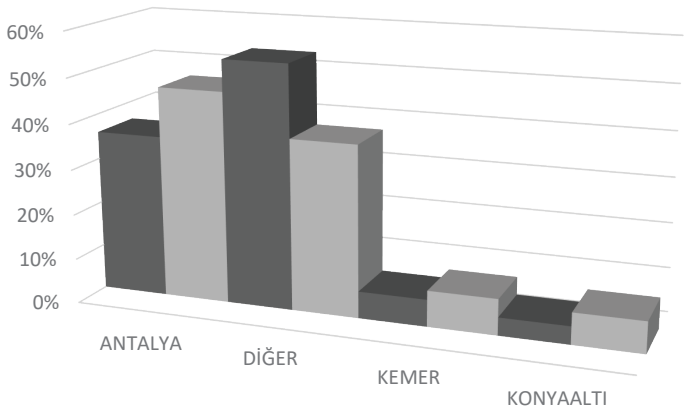


Employee Statistics for 2024

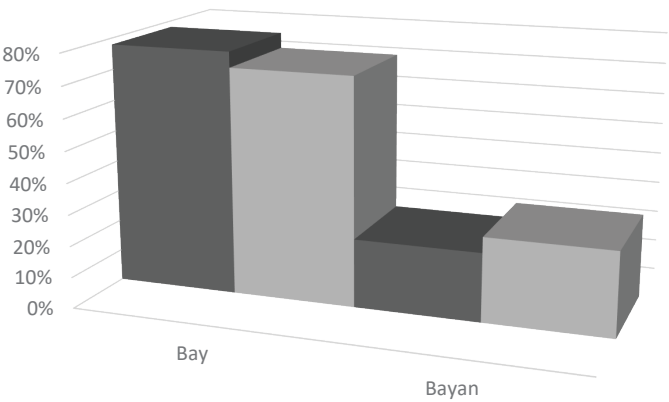
Employee Distribution By Cities



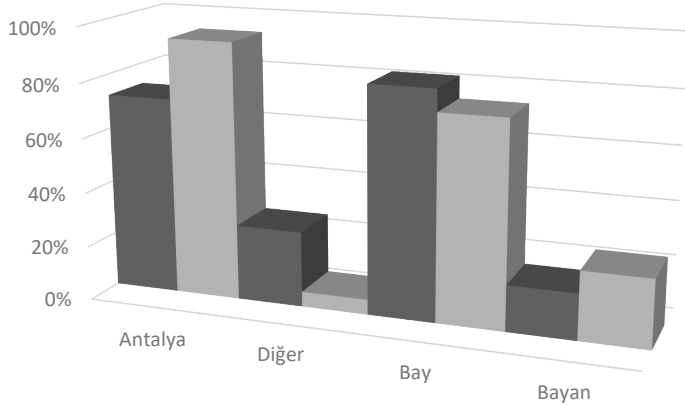
Regional Employee 2023-2024



Gender Distribution 2023-2024

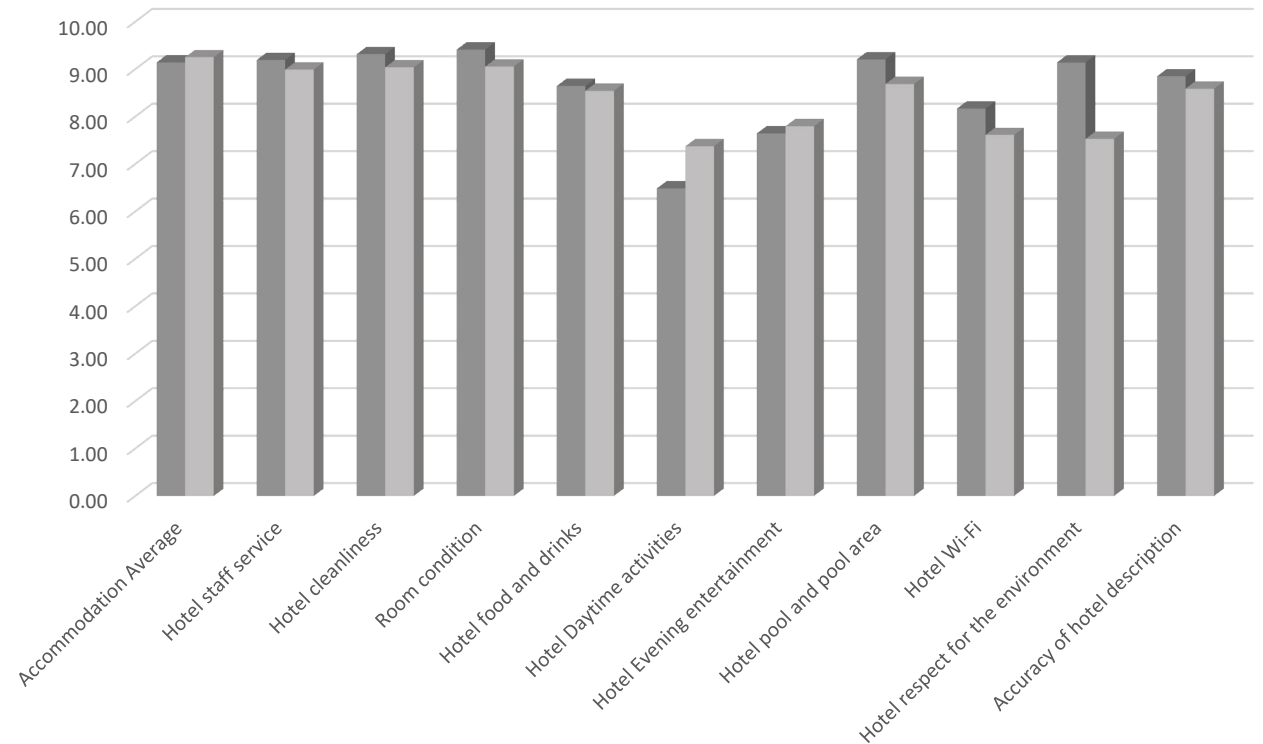


Manager Position 2023-2024



We are in constant communication with our guests, seeking solutions by reviewing the feedback we receive from them.

Through the satisfaction surveys we conduct, we gain insights into their holiday experiences, allowing us to identify our strengths and areas for improvement accordingly.



Respect for the Environment – Energy Conservation

Being aware that our energy resources are limited, we monitor our consumption data, raise awareness among our employees, and carry out initiatives to ensure the continuous improvement of energy efficiency, all in support of reducing energy and water use.

To avoid harming the environment, we manage our waste and hazardous waste in line with recycling principles, ensuring they do not pollute nature. We also take special care to protect the plant and animal species unique to our region.

Throughout our facility, LED bulbs are used, and sensitive sensors help prevent energy consumption in unused areas. All our air conditioning systems have been selected for their energy-saving features.

Waste Management

Recyclable Waste Management:

- We undertake various initiatives to reduce waste generation at its source and encourage guests and employees to participate in our recycling program.
- Within the framework of a zero-waste project, we segregate waste according to color codes.
- Our staff receives training on waste segregation to ensure proper disposal and recycling.
- Temporary waste storage areas separate plastic, paper-cardboard, metal, glass, organic, and grass waste, which are subsequently delivered to licensed firms for recycling.
- We prioritize purchasing bulk-packaged products over single-use items to minimize packaging waste.
- Water coolers in staff areas reduce single-use water consumption.
- To reduce plastic waste in guest areas, pitchers are used in restaurants and water dispensers in bars for water service.
- We opt for bulk-packaged products instead of single-use breakfast items to prevent packaging waste.
- Refillable soap dispensers are used in public restrooms, staff handwashing sinks, and toilets to reduce plastic waste.
- We minimize paper consumption by conducting communications and announcements via email whenever possible.
- All published documents within our operations are digitally accessible to department managers.
- Records that can be tracked electronically are not printed, and continuous internal and external training is provided to enhance staff awareness.
- "Waste Separation Bins" are available in public areas of the hotel to facilitate waste segregation at the source.
- In guest rooms, organic waste and packaging waste are separated.
- Waste in food production and presentation areas is segregated at the source based on waste types.

balmy
HOTELS



DAHA AZ PLASTİK ŞİŞE

Çevreye olan sorumluluğumuzun bilincindeyiz, sürdürülebilir bir gelecek için adımlar atmaktan gurur duyuyoruz. Otelimizde plastik şişe kullanımını minimumuma indirdiğimizi sizlerle paylaşmaktan mutluluk duyuyoruz.

Bu uygulamayı destekleyerek bizimle birlikte çevreyi koruma çabalarımıza katıldığınız için teşekkür ederiz. Sizlerin de desteğiyle, daha yeşil ve daha sürdürülebilir bir dünya yaratma yolunda önemli adımlar atmaya devam edeceğiz.

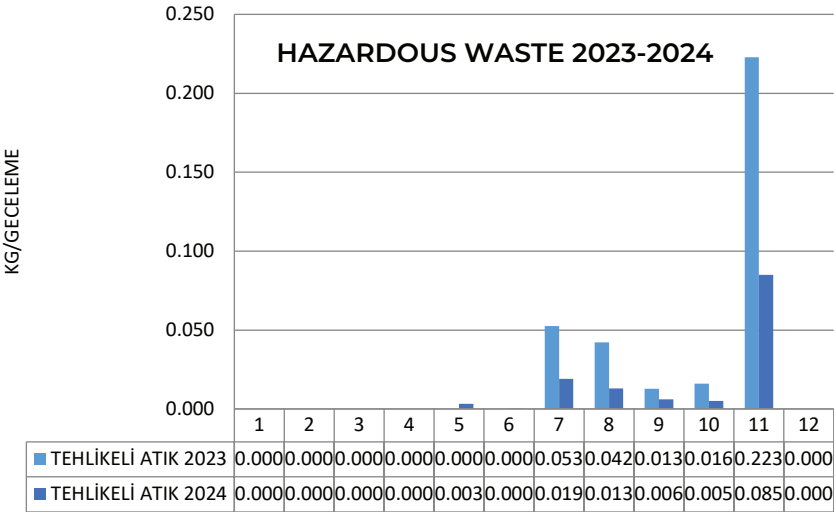
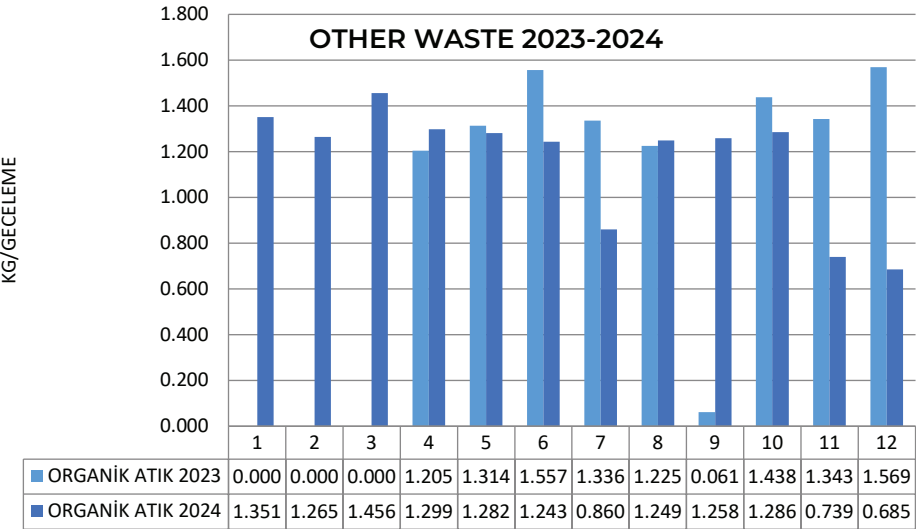
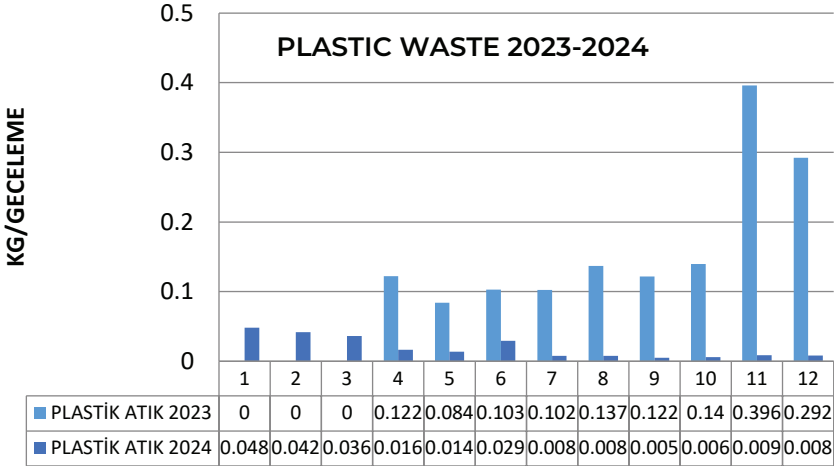
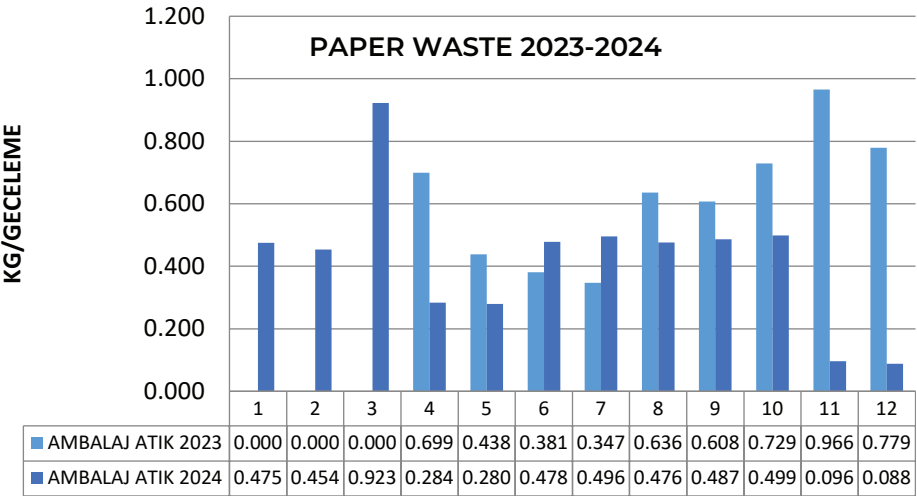
ONE LESS PLASTIC BOTTLE

We are aware of our responsibility to the environment and we are proud to take steps for a sustainable future. We are happy to share with you that we have minimized the use of plastic bottles in our hotel.

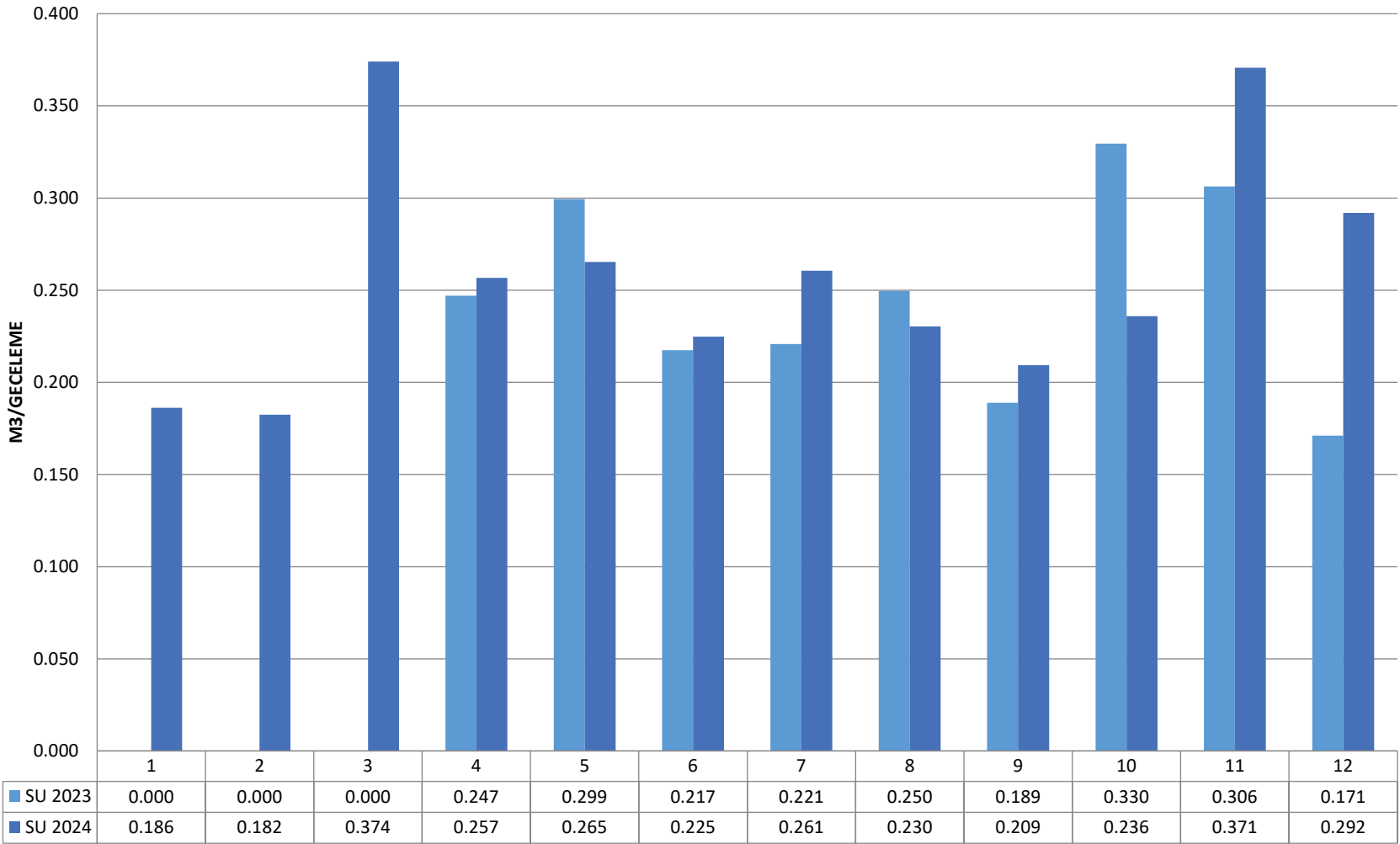
Thank you for supporting this practice and joining us in our efforts to protect the environment. With your support, we will continue to take important steps towards creating a greener and more sustainable world.



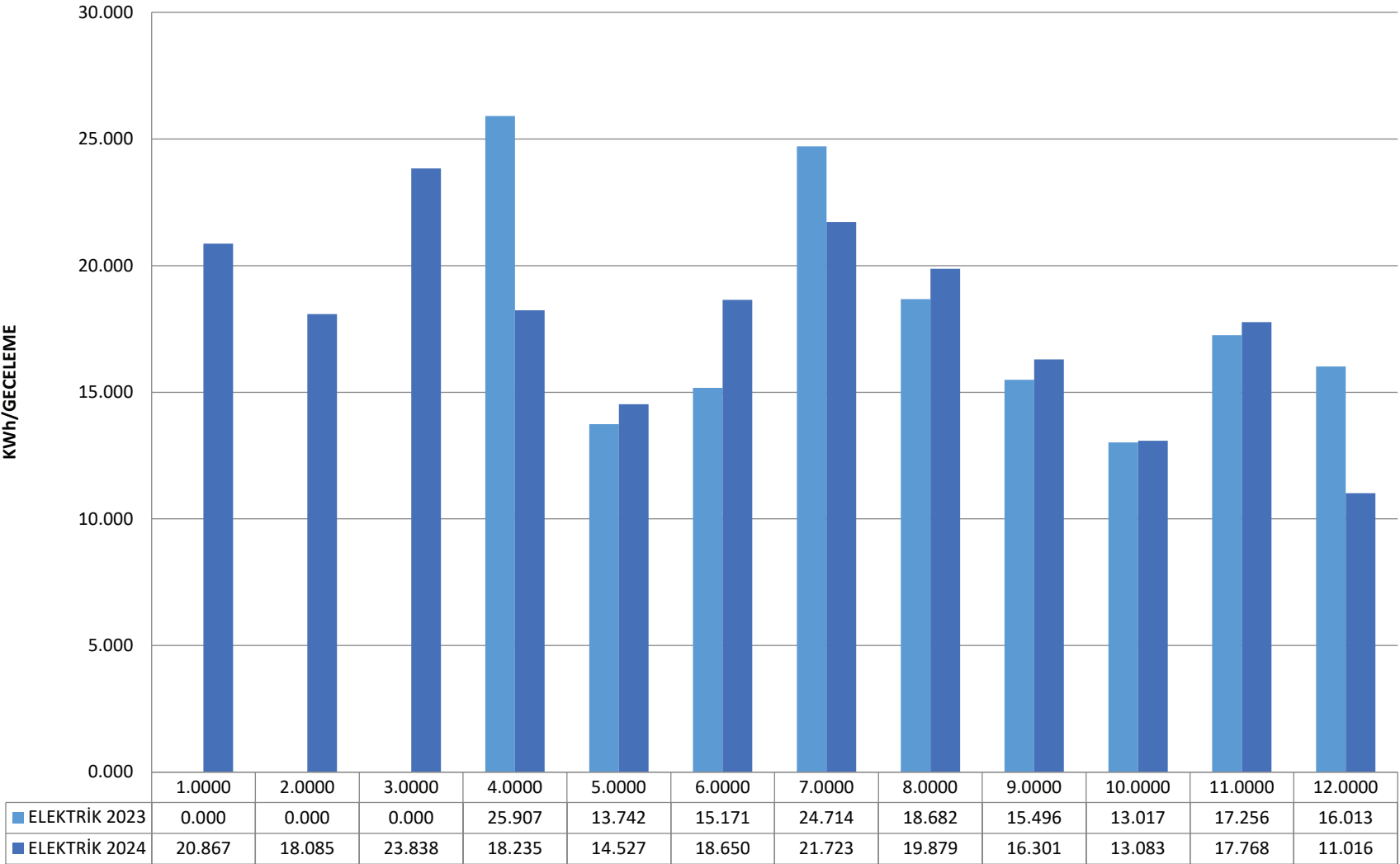
Waste Tables 2023-2024



WATER CONSUMPTION TABLE 2023-2024



ELECTRIC CONSUMPTION TABLE 2023-2024



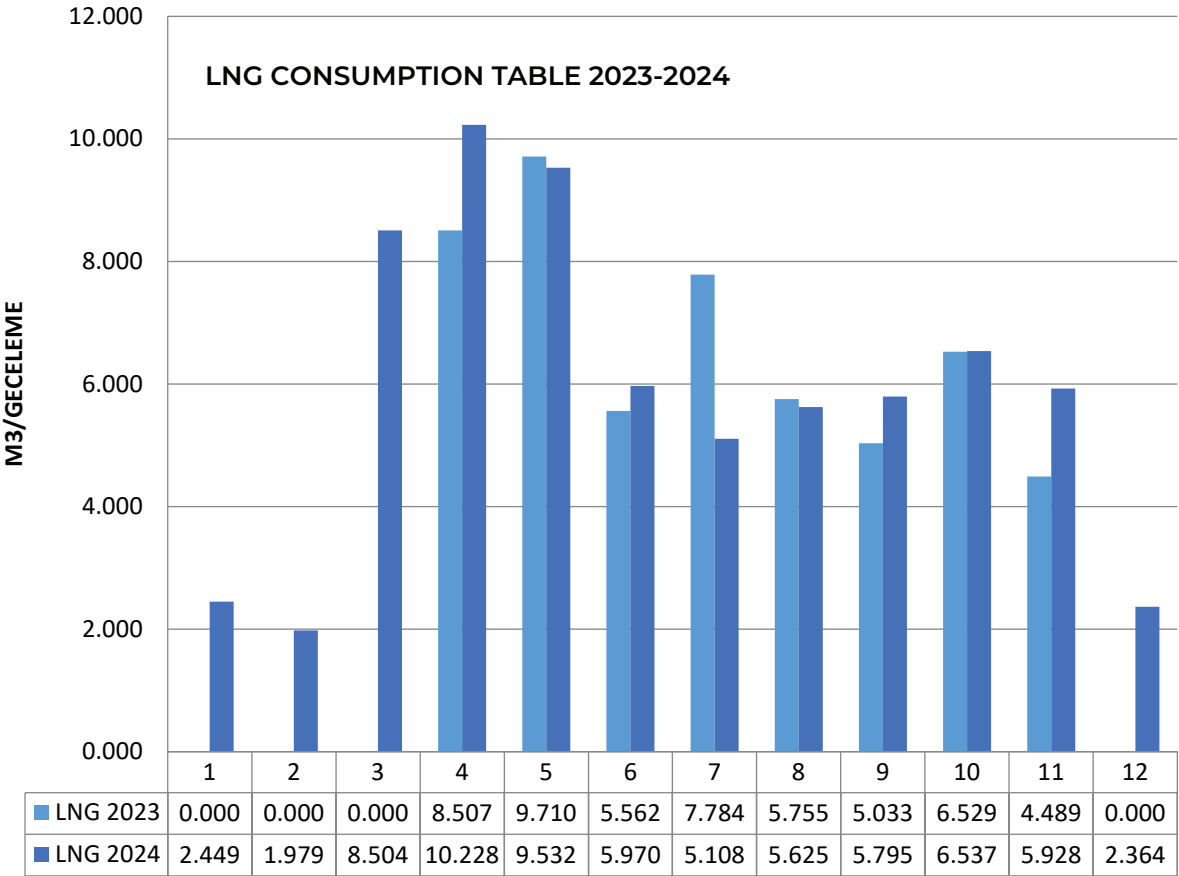
Energy Consumption Reduction

Efforts Planned maintenance for natural gas pressure regulators in boilers and kitchen areas is scheduled.

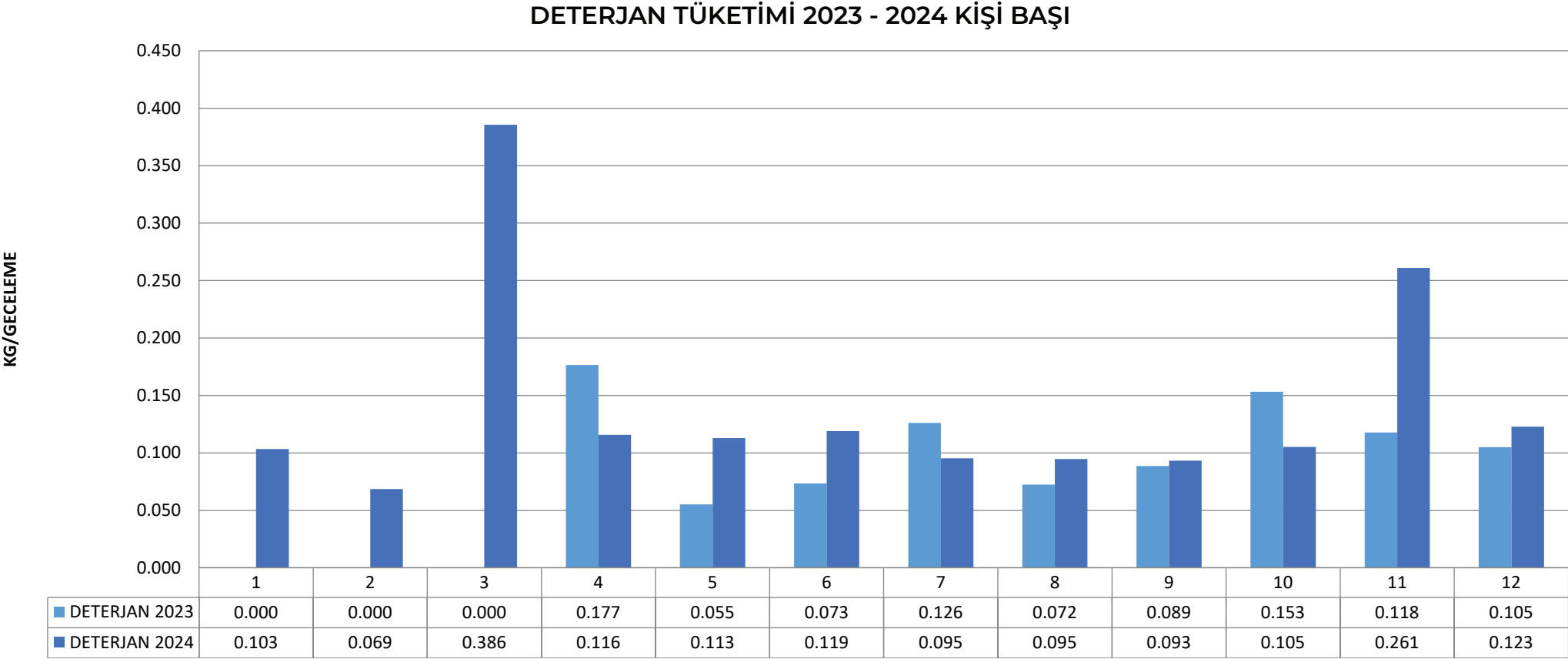
Maintenance for boilers and heat exchanger systems will be carried out during the summer months.

Aging of boilers will be monitored with regular maintenance

Kitchen staff will be instructed on the operation of gas-operated ovens.



We track the consumption of the chemicals we use and implement measures to reduce per capita consumption without neglecting hygiene conditions.



Guest awareness ;

In the vicinity of our hotel, there are cultural heritages such as the ancient cities of Phaselis and Olympos, where endangered species reside along the coastline. Especially, the nesting area of Caretta Caretta sea turtles is protected. When our guests visit these areas, we inform them through valuable QR codes placed on cages along the beach to not approach the nests, refrain from making fires, avoid leaving waste on the shore, and ensure not to disturb the wildlife.



BALMY'YE HOŞ GELDİNİZ! YAŞAMI ÖNEMSIYORUZ

Burası, deniz kaplumbağalarının önemli bir yuvalama alanıdır. 1 Mayıs - 1 Ekim tarihleri arasında deniz kaplumbağalarının üreme mevsimidir. Onları korumak ve birlikte yaşamak için gerçekleştirdiğimiz koruma çalışmalarına lütfen destek veriniz.

Sahildeki uyarı levhaları ile belirlenen bölgeler, "Deniz Kaplumbağası Yuvalama Alanları"dır. Bu kumsalın bu bölümlerini kullanırken lütfen azami özeni gösteriniz. Daha fazla bilgi ve farklı dil seçenekleri için QR kodunu okutarak erişim sağlayabilirsiniz.

WELCOME TO BALMY! WE PRESERVE LIFE

This is an important nesting site for sea turtles. May 1 - October 1 is the breeding season for sea turtles. Please support our conservation efforts to protect them and live together.

The areas identified by warning signs on the beach are "Sea Turtle Nesting Areas". Please take the utmost care when using these parts of the beach. For more information and different language options, please scan the QR code.




Biological diversity

Balmy Nature

Biological diversity is of critical importance for the creation of a livable and healthy environment. Various organisms with different functions and characteristics are integral parts of natural order. To ensure the continuity of life on Earth, preserving and sustaining this natural balance is essential, and at Balmy, we are aware of our responsibility in this regard.

To enhance our guests' awareness, we have Biodiversity Information Panels in our garden.




Balmy Doğası Biyolojik çeşitlilik, yaşanabilir ve sağlıklı bir çevrenin oluşması için hayati bir öneme sahiptir. İşlevleri ve özellikleri birbirinden farklı çeşitli canlılar doğal düzenin bir parçasıdır. Dünya üzerindeki yaşamın devam edebilmesi için bu doğal dengenin korunması ve devam ettirilmesi için Balmy olarak üzerimize düşen görevin farkındayız.

The Nature of Balmy Biodiversity is of vital importance for the formation of a livable and healthy environment. Various living beings with different functions and characteristics are part of the natural order. We at Balmy know our duty to preserve and maintain this natural balance for the continuity of life on Earth.

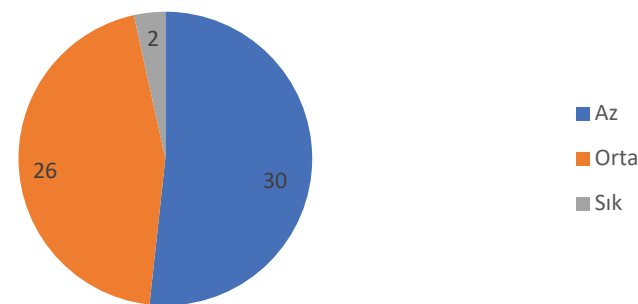
Die Natur von Balmy Die Biodiversität ist von entscheidender Bedeutung für die Schaffung einer lebenswerten und gesunden Umwelt. Verschiedene Lebewesen mit unterschiedlichen Funktionen und Eigenschaften sind Teil der natürlichen Ordnung. Wir bei Balmy sind uns unserer Pflicht bewusst, dieses natürliche Gleichgewicht zu bewahren und aufrechtzuerhalten, um das Leben auf der Erde fortzusetzen.

Природа Balmy Биоразнообразие имеет жизненно важное значение для формирования пригодной для жизни и здоровой окружающей среды. Различные живые существа с различными функциями и характеристиками являются частью природного порядка. Мы в Balmy осознаем нашу обязанность сохранять и поддерживать этот природный баланс для продолжения жизни на Земле.

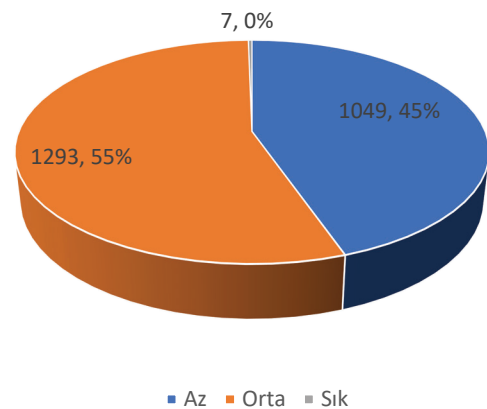


Distribution of Plant Species in the Garden

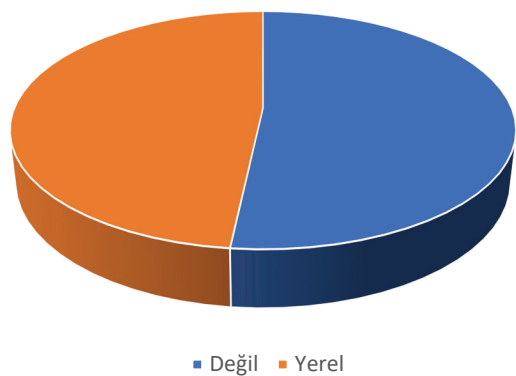
Water Requirements by Plant Diversity Chart



Graph of Water Needs Based on Total Plant Count



Distribution Of Local Varieties By Palnt Type



Locality Rate By Number Of Plants

